

# PLATINIUM 3-SECTION COMBINATION

## Highly versatile

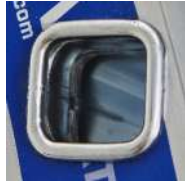
The Platinum aluminium 2-way combination ladder has a splayed base, very safe wraparound pads and patented Quickstep articulation which set the standard for the market. It guarantees strength, flexibility and safety for all users. Models with 3x7 to 3x12 rungs provide access to heights of up to 8.88 metres and 4 positions. It complies with the EN 131 standard, decree 96-333 and the NF, VGS and GS quality labels.



- ⋮ The most versatile model on the market.
- ⋮ Designed for resisting heavy loads on all types of surfaces.
- ⋮ The high-resistance cast aluminium hinge is unbreakable.
- ⋮ The upper section is held onto the central section by two sliding mechanisms at the top and two hooks fitted with a safety lock at the bottom.
- ⋮ Reinforced uprights for long life and stability.
- ⋮ High-security covering footpads.
- ⋮ Extra thick upright width.
- ⋮ Resistance tests more stringent and dimensions larger than required by standards and decrees.
- ⋮ Hinges capable of withstanding the hardest tests.



The hinge makes the unit very easy to open. The hinge is intuitive, semiautomatic and inseparable for the +3 m model



Highly-strength rungs with triple crimp-fitting onto the uprights.



The 2 hooks on the upper section lock onto the rungs on the lower section when the ladder is at the correct height



The ladder-opening system puts itself into position automatically. Quicksafe patented system by Tubesca-Comabi



Distance between rungs 28 mm. 3 x 3 mm rungs.

Product characteristics	
<b>Use</b>	Ultra intensive
<b>Use</b>	Flat and uneven floor
<b>Max access / working height (m)</b>	8,59
<b>Material</b>	Aluminium
<b>Maximum load (kg)</b>	150
<b>Warranty (years)</b>	5
<b>Norms</b>	EN 131
<b>Decree</b>	96333
<b>NF Label //</b>	

Ref.	Folded H (m)	Deployed Height (m)	Nb of steps	Weight	Width stabilizers folded (m)	Wheelbase	Section	Max access Height (m)	Gencod
02443607	2,09	4,89	3x7	13,1	0,84	1,45	66	5,8	3178740187927
02443608	2,37	5,17	3x8	14,8	0,93	1,54	66	6,08	3178740187934
02443609	2,65	6,01	3x9	18,2	1,02	1,85	79,5	6,92	3178740187941
02443610	2,93	6,85	3x10	20	1,1	1,97	79,5	7,76	3178740187958
02443612	3,49	7,69	3x12	24,3	1,18	2,47	79,5	8,59	3178740187965

Holding strap on 3x10 and 3x12